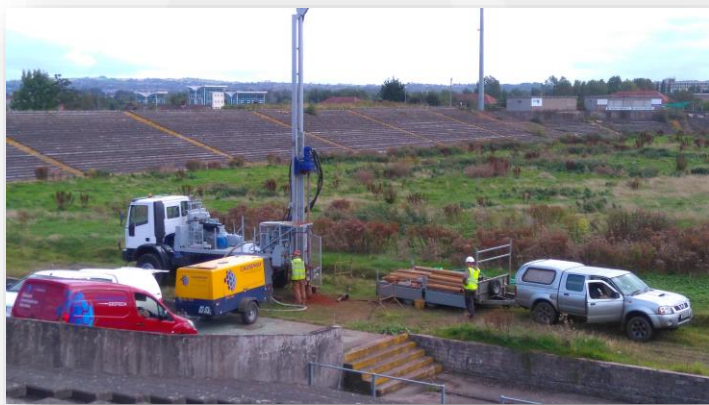




Rotary rig set-up in position over borehole location



Trial pitting works underway behind the main stand



Drilling works underway at pitch side borehole location

## Project Information

### CASEMENT PARK STADIUM GEO-ENVIRONMENTAL GROUND INVESTIGATION

**Client:** CLG Uladh / Ulster GAA Council

**Client's Representative:** Mott McDonald Consulting Engineers

**Site operations:** September to December 2016

Causeway Geotech were appointed by the Ulster GAA Council to carry out ground investigation works for provision of geotechnical and environmental information to characterise ground conditions and any existing contamination within the Casement Park Stadium complex for input to the design and construction of a proposed new GAA stadium.

The scope of works included:

- 8 boreholes by cable percussion boring
- 5 boreholes continued into rockhead by Geobor S wireline coring
- 8 standpipe installations for combined gas and groundwater sampling
- 3 variable head permeability tests in boreholes
- 13 trial pits by excavator
- Asbestos survey including sampling/screening at all exploratory hole locations during site works
- 4 rounds of post siteworks gas and ground water monitoring to include installations from previous investigations
- Factual ground investigation report

Works were carried out under the supervision of a Site Engineer from Causeway Geotech who liaised with the Client's Representative and stadium caretaker.

The primary focus of the investigation was the subsequent gas and groundwater monitoring programme which was completed over a 3 week period in November 2016.

An independent asbestos survey was conducted at all exploratory hole locations due to the use of imported industrial fill during the construction of the existing stadium.